

## Variable dimensions:

### A: Insertion length

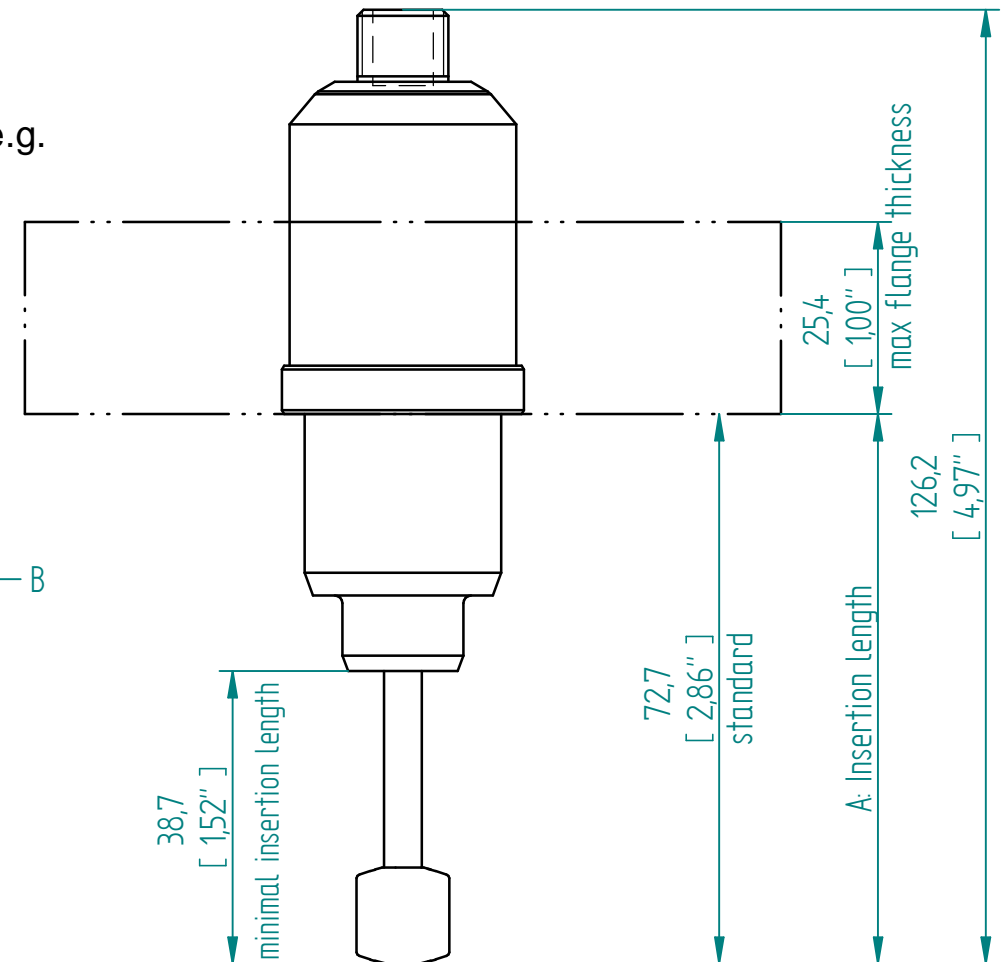
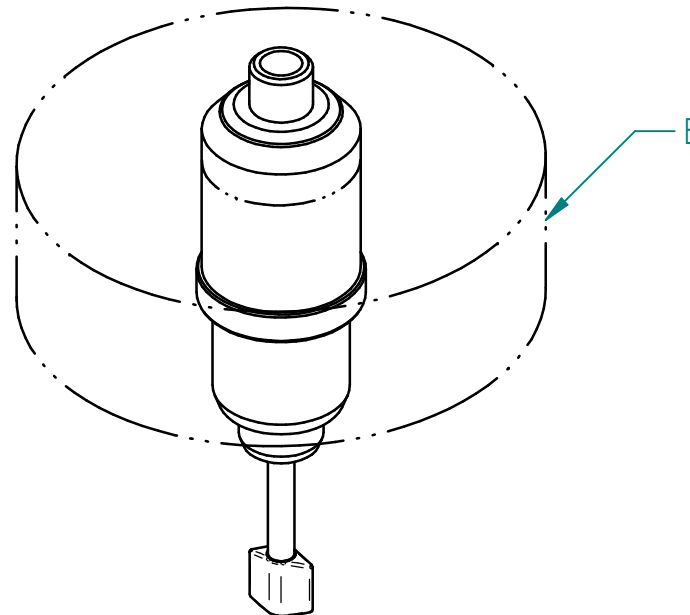
Standard insertion length is 72.7 mm  
Custom lengths are possible from  
 $38.7\text{mm} < A < 72.7\text{mm}$

### B: Flange/adapter:

Specify the norm, size, pressure rating, e.g.

*ANSI 150 LB RF 2 inch*

*ANSI 300 LB RF 1.5 inch*



Units: mm  
[inch]

## SRD flange

This drawing remains property of rheonics. It may be neither copied nor informed to third persons or competitors without our approval. ( 2 paragraph 1 fig.7 copyright act of 9th Sept. 1965)

rheonics



inline process  
density and viscosity  
monitoring

Protected by US and International patents granted and pending

rheonics • Switzerland • USA • [www.rheonics.com](http://www.rheonics.com) • [info@rheonics.com](mailto:info@rheonics.com) +41 52 511 32 00 +1 713 364 5427